

PRODUCT DATA SHEET

# LED LIGHTPACK

[www.fitzlight.co.uk](http://www.fitzlight.co.uk)  
**01208 79524**

**Fitzgerald** 

# LED LIGHTPACK

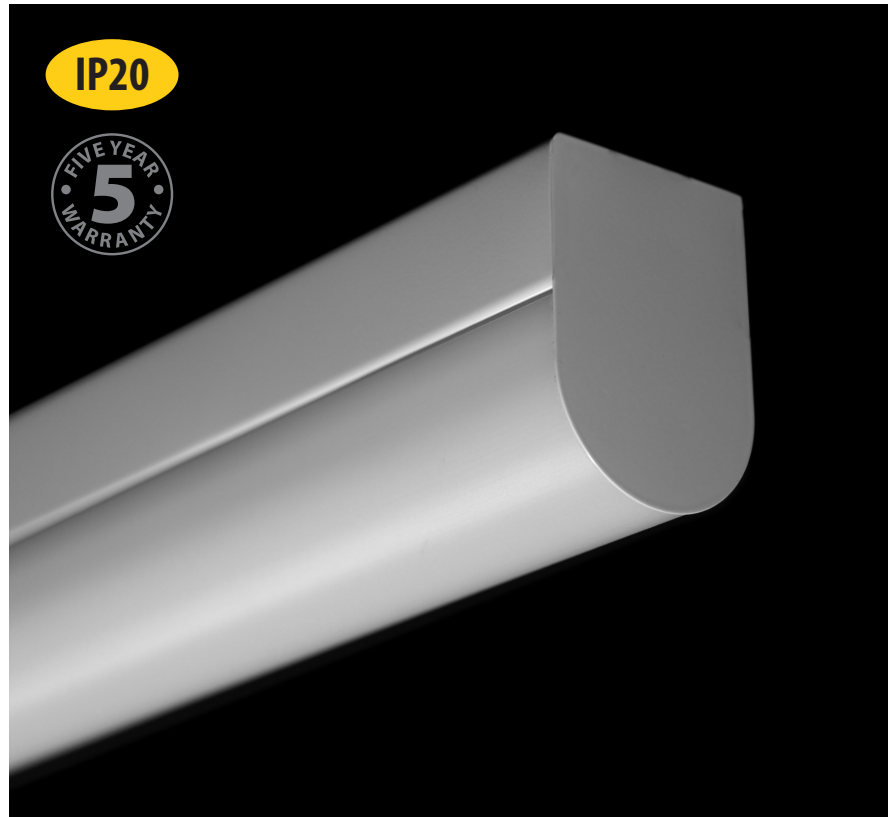
Our new LED Lightpack is an energy saving lighting concept which can be fitted with a variety of sensors for further saving.

A slim luminaire with clean lines that gives a pure white light for your industrial or commercial applications.



## Applications:

- Schools
- Offices
- Kitchens
- Workshops
- Factories
- Corridors

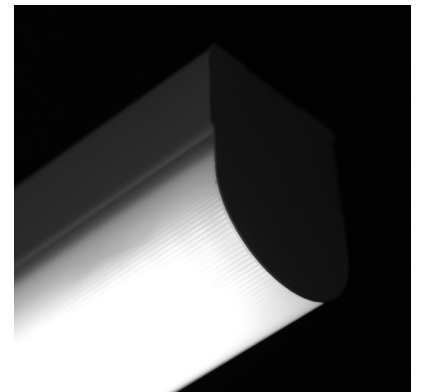


## Product Specifications:

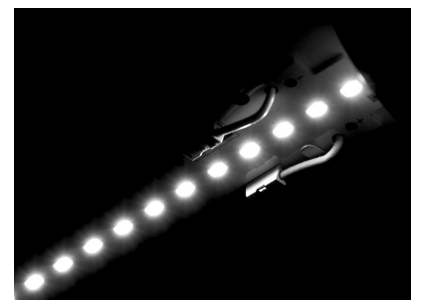
- Manufactured from mild steel with white paint finish with a specially designed PMMA diffuser
- Constant output driver with colour 840 as standard

## Optional Features:

/BK: Black paint finish



High quality LED chips mounted in a robust steel box frame

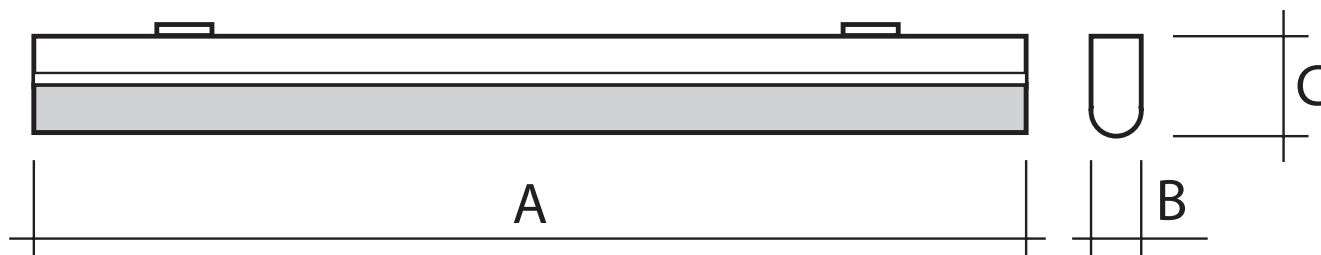


Cool white 4000 kelvin LED gives an outstanding performance



Designed and manufactured in the United Kingdom

# LED LIGHTPACK



## ORDER CODES

<b>LED Lightpack - Single</b>	Board Lumens	Watts	A	B	C
LPL/2/CO/840	1200	8	526	59	83
LPL/3/CO/840	2400	16	862	59	83
LPL/4/CO/840	3000	20	1142	59	83
LPL/5/CO/840	4002	29	1422	59	83
LPL/6/CO/840	5520	40	1702	59	83
<b>LED Lightpack - Twin</b>	Board Lumens	Watts	A	B	C
LPL/2T/CO/840	2400	16	526	59	83
LPL/3T/CO/840	4140	30	862	59	83
LPL/4T/CO/840	6000	40	1142	59	83
LPL/5T/CO/840	8004	58	1422	59	83
LPL/6T/CO/840	9108	66	1702	59	83

### LED Lightpack part code formula example:

Product Family	Body Style	Output Driver	Colour Temp	Emergency Option
<b>LPL</b>	<b>5T</b>	<b>CO</b>	<b>840</b>	<b>M3</b>

**Emergency Options: /M3:** 3hr maintained emergency option available on both bodies.